

# No. 23 - Merry Christmas, Happy New Year

(The Rockefeller Center Song)

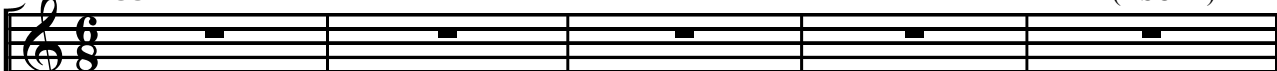
Scene ii

(chorus)

Michael DeMaio  
(ASCAP)

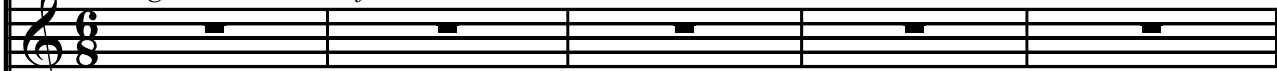
**Leggiero** (with a triplet feel) ♩ = 74

Soprano

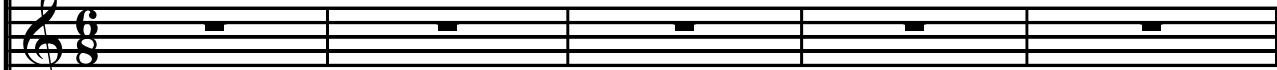


*Rockefeller Center is crowded with happy revelers enjoying the traditional sights and sounds of New York at Christmas.*

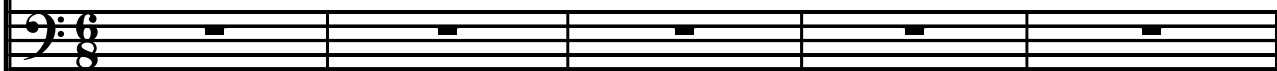
Alto



Tenor



Bass



Piano

6

*lights*



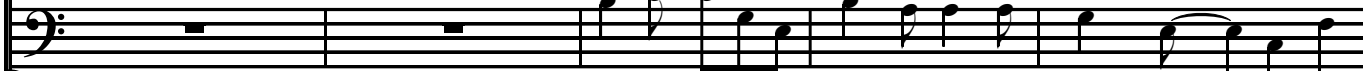
Ev'-ry bod-y wants to see the world's most fam-ous



Ev'-ry bod-y wants to see the world's most fam-ous



Ev'-ry bod-y wants to see the world's most fam-ous



Ev'-ry bod-y wants to see the world's most fam-ous

Once Upon a Christmas - No. 23 - "Rockefeller Center Song"

11

Christ-mas tree. Peo-ple come from miles a-round to see the sights and hear the sounds of New  
Christ-mas tree. Peo-ple come from miles a-round to see the sights and hear the sounds of New  
8 Christ-mas tree. Peo-ple come from miles a-round to see the sights and hear the sounds of New  
Christ-mas tree. Peo-ple come from miles a-round to see the sights and hear the sounds of New

The musical score for measures 11-15 consists of four vocal staves and a piano accompaniment. The vocal parts are in treble clef, and the piano part is in bass clef. The lyrics are: "Christ-mas tree. Peo-ple come from miles a-round to see the sights and hear the sounds of New".

16

York at Christ - mas time. As they stroll down the  
York at Christ - mas time. As they stroll down the  
8 York at Christ - mas time. As they stroll down the  
York at Christ - mas time. As they stroll down the

The musical score for measures 16-20 consists of four vocal staves and a piano accompaniment. The vocal parts are in treble clef, and the piano part is in bass clef. The lyrics are: "York at Christ - mas time. As they stroll down the".

Once Upon a Christmas - No. 23 - "Rockefeller Center Song"

21

ave - en - ue. Fifth ave-en-ue. There goes the pret-zel man. The  
ave - en - ue. Fifth ave-en-ue. There goes the pret-zel man. The  
8 ave - en - ue. Fifth ave-en-ue. There goes the pret-zel man. The  
ave - en - ue. Fifth ave-en-ue. There goes the pret-zel man. The

The musical score for measures 21-25 consists of four vocal staves and a piano accompaniment. The vocal staves are arranged in two pairs. The first pair (top two staves) and the second pair (bottom two staves) each have a soprano line and an alto line. The lyrics are: "ave - en - ue. Fifth ave-en-ue. There goes the pret-zel man. The". The piano accompaniment is written in a grand staff (treble and bass clefs) and provides harmonic support for the vocal lines.

26

skat-ers glid-ing hand in hand. \_ An-gels glist-en snow-y white, keep-ing watch \_ all  
skat-ers glid-ing hand in hand. \_ An-gels glist-en snow-y white, keep-ing watch \_ all  
8 skat-ers glid-ing hand in hand. \_ An-gels glist-en snow-y white, keep-ing watch \_ all  
skat-ers glid-ing hand in hand. \_ An-gels glist-en snow-y white, keep-ing watch \_ all

The musical score for measures 26-30 consists of four vocal staves and a piano accompaniment. The vocal staves are arranged in two pairs. The first pair (top two staves) and the second pair (bottom two staves) each have a soprano line and an alto line. The lyrics are: "skat-ers glid-ing hand in hand. \_ An-gels glist-en snow-y white, keep-ing watch \_ all". The piano accompaniment is written in a grand staff (treble and bass clefs) and provides harmonic support for the vocal lines.

Once Upon a Christmas - No. 23 - "Rockefeller Center Song"

31

through the night on New York at Christ - mas time. Lov - ers

through the night on New York at Christ - mas time. Lov - ers

8 through the night. On New York at Christ - mas time. Lov - ers

through the night. On New York at Christ - mas time. Lov - ers

The piano accompaniment consists of two staves (treble and bass clef) with chords and melodic lines.

36

gaze at the lights as the air seems to sing: Mer - ry

gaze at the lights as the air seems to sing: Mer - ry

8 gaze at the lights as the air seems to sing: Mer - ry

gaze at the lights as the air seems to sing: Mer - ry

The piano accompaniment includes a *glock.* (glockenspiel) part in the right hand of the piano staff.

Once Upon a Christmas - No. 23 - "Rockefeller Center Song"

41

Christ-mas. Hap - py New Year. May it bring us  
Christ-mas. Hap - py New Year. May it bring us  
8 Christ-mas. Hap - py New Year. May it bring us  
Christ-mas. Hap - py New Year. May it bring us

The musical score for measures 41-45 consists of four vocal staves and a piano accompaniment. The vocal parts are in treble clef, and the piano part is in bass clef. The lyrics are: "Christ-mas. Hap - py New Year. May it bring us". The piano accompaniment features a steady eighth-note bass line and chords in the right hand.

46

good-ness and cheer through all the year. —  
good-ness and cheer through all the year. —  
8 good-ness and cheer through all the year. —  
good-ness and cheer through all the year. —

The musical score for measures 46-50 consists of four vocal staves and a piano accompaniment. The vocal parts are in treble clef, and the piano part is in bass clef. The lyrics are: "good-ness and cheer through all the year. —". The piano accompaniment continues with a steady eighth-note bass line and chords in the right hand. The key signature changes to B-flat major at the start of measure 46.

Once Upon a Christmas - No. 23 - "Rockefeller Center Song"

51

**a woman**

The joy of the seas - on\_ brings love to the air. And

**a man**

The joy of the seas - on\_ brings love to the air. And

*p.*

56

love is\_ the reas - on\_ that we're\_ all here sing - ing: Mer - ry

Ooh.\_\_\_\_\_ Mer - ry

love is\_ the reas - on\_ that we're\_ all here sing - ing: Mer - ry

Ooh.\_\_\_\_\_ Mer - ry

*p.*